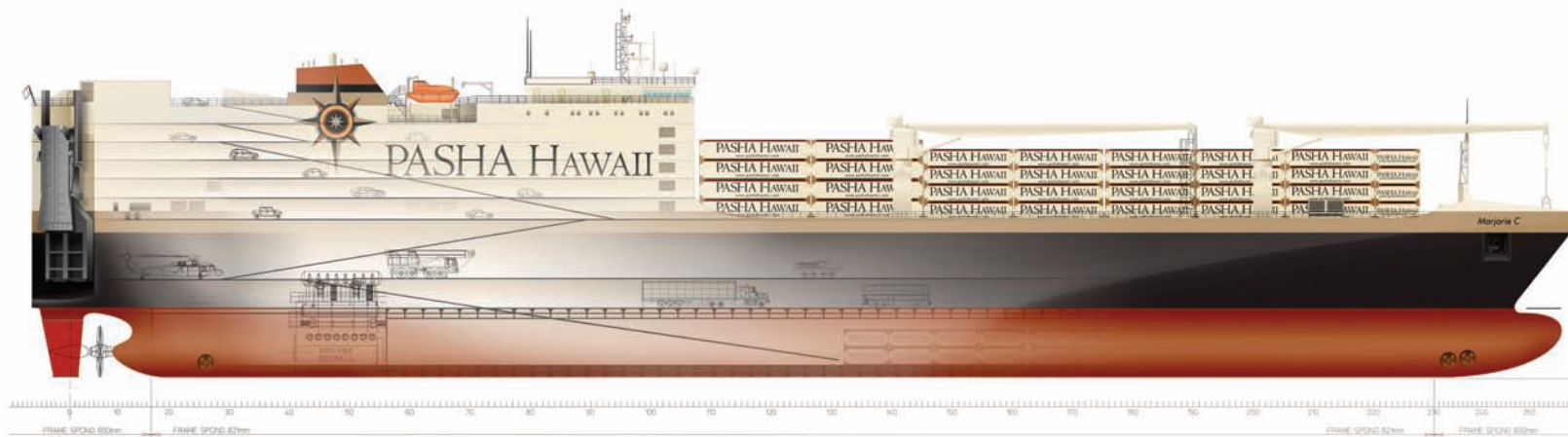




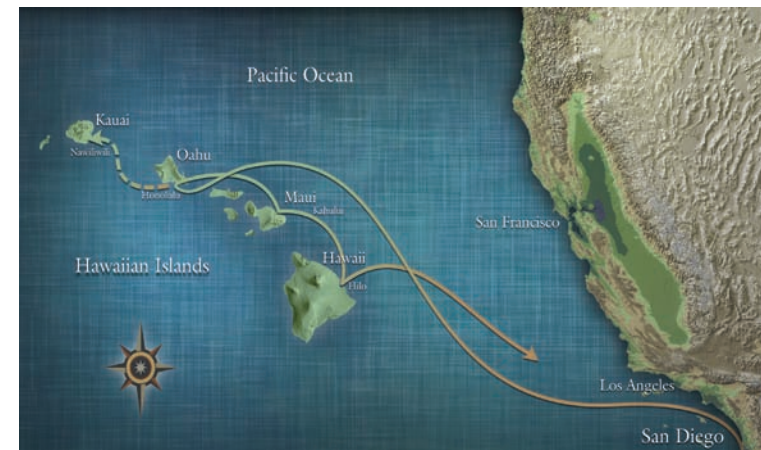
PASHA HAWAII

The *M/V Marjorie C* is scheduled to enter service in the Fall of 2013. A combination container and roll-on/roll-off vessel she will serve the Mainland to Hawaii trade lane on a fortnightly basis, and will provide the only regularly scheduled direct calls to Kahului and Hilo for both Ro/Ro and container shipments.



***Marjorie C* Overview**

- Currently under construction at VT Halter Marine, Pascagoula, MS
- Designed by the Uljanik Shipyard, Croatia
- A Jones Act Ship
- Fortnightly calls to San Diego, Honolulu, Kahului, and Hilo
- Sailing schedule opposite Pasha Hawaii's *M/V Jean Anne*
- Designed to serve container, automotive, rolling cargo and over high and wide clients
- Flexible capability accommodating all sizes and types of containers and rolling cargo
- Environmentally responsible design, engineering, construction and operations
- 120-ton stern ramp and three strong decks to accommodate Over High and Wide cargoes



The *Marjorie C* will maintain the same ports of call as the *Jean Anne* and sail the opposite schedule fortnightly, enabling the Pasha Hawaii fleet to offer weekly service between the Mainland and Hawaii.

PASHA HAWAII

Combination Container and Roll-On / Roll-Off Service Between the Mainland and Hawaii

Main Particulars

Length Overall ~ 692 ft.

Beam ~ 106 ft.

Draft ~ 31 ft.

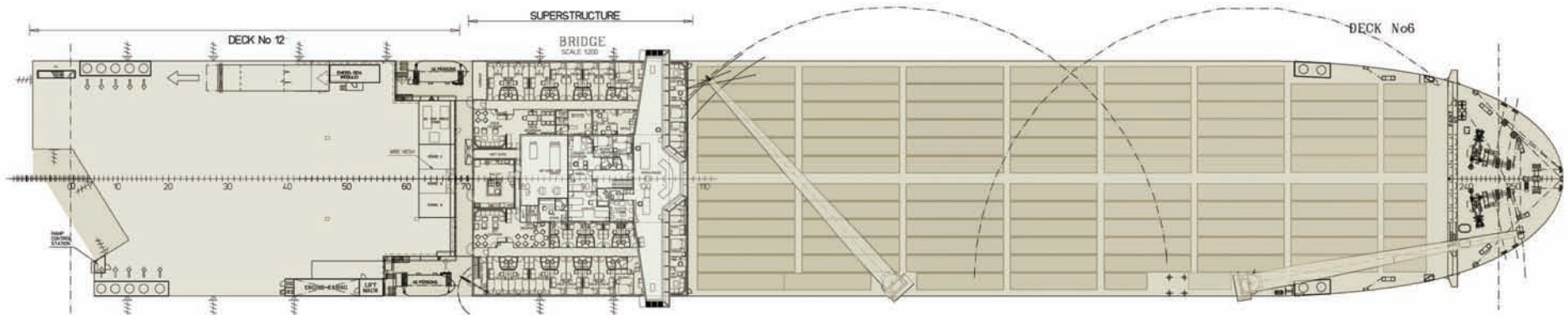
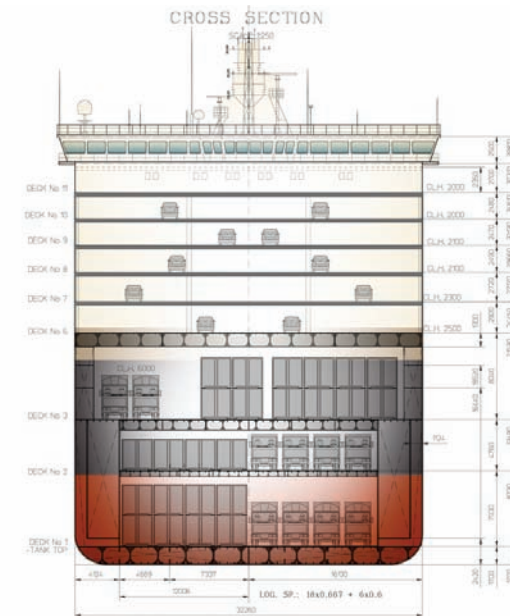
Deadweight ~ 26,600 tons

Quarter Stern Ramp Capacity ~ 250 tons

Quarter Stern Opening ~ 39.4 Feet Wide x 21.4 Feet High

Container Capacity ~ 1,500 Teu's

Automobile Capacity ~ 2,750 autos



Pasha Hawaii
www.pashahawaii.com
The Pasha Group
www.pashagroup.com

Pasha Hawaii
677 Ala Moana Blvd., Suite 700
Honolulu, HI 96813

Pasha Hawaii
5725 Paradise Drive, Suite 1000
Corte Madera, CA 94925

